

TITAN™ 8 PASSIVE - FEATURES



■ Proprietary 90° x 60° Elliptical Wave Guide™ horn design.

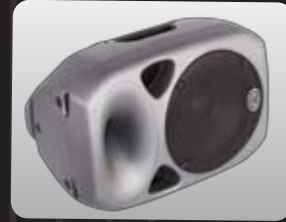


■ The rubber-padded carry handles make the job of transporting the enclosure easier than ever.



■ Custom 8" Low Frequency driver and ferrofluid cooled high frequency compression driver provide exceptional clarity, high power handling capability and maximum efficiency.

■ Moisture-proof driver for wherever you play.



■ Trapezoid shape for arrays as well as stage monitor applications.



■ WALL MOUNT BRACKET – Enables surface mounting of the Titan™ 8 for fixed installations with pan and tilt positioning.



■ Using state of the art, gas assist injection moulding technology, plus an internal laminar flow rib pattern we have increased the enclosures rigidity and reduced its weight compared with standard injection moulded enclosures.



■ The bottom of the Titan™ 8 provides a convenient built in pole mount socket for easy mounting on a standard 35mm diameter speaker stand pole.



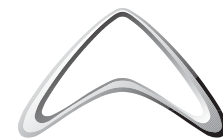
■ Optional TITAN™ TOUR BAG – Ballistic nylon zippered carry bag protects your Titan™ 8 and features a storage pocket for cables.

■ The speaker stand receptacle features a locking screw to ensure stability.

■ Eight M6 threaded rigging points are provided for a variety of safe flying configurations with four of these inserts available, bottom-mounted, in an OmniMount® 60.0 bracket footprint.



TITAN™ 8 PASSIVE



The brand new stunning Titan™ 8 is the latest passive, two-way loudspeaker introduced by Wharfedale Pro. The Titan™ 8 combines the newest technologies, materials and design topology, including a titanium compression driver and heavy-duty cast-frame woofer, to ensure absolute accuracy, high output and the smooth, wide dispersion of the critical mid and high frequency ranges.

Titan™ 8 enclosure is created using state of the art, gas assist injection moulding technology, enabling us to mould thicker, hollow core enclosure walls, which are stronger, sonically superior and much lighter in weight than standard injection moulded enclosures. Also, internal laminar flow ribs further increase the rigidity of the enclosure. This intelligent enclosure design, along with a custom Wharfedale Pro transducer is essential in the reproduction of punchy low end down to 55Hz.

Because of its functional cabinet design, the Titan™ 8 is versatile and easily mounted in a variety of configurations. A top stacking feature is provided for multi-loudspeaker applications and the Titan™ 8 also can be used on its side as a stage monitor. The speaker stand receptacle features a locking screw to ensure stability and rubber-padded carry handles make the job of transporting the enclosure easier than ever. Cord wrap and cable anchor features are also molded into the enclosure. Eight M6 threaded rigging points are provided for a variety of safe flying configurations with four of these inserts available, bottom-mounted, in an OmniMount® 60.0 bracket footprint.

Powerful, compact, lightweight and affordable, the Titan™ 8 is the ideal choice for installation and outdoor applications. It delivers the high level, even dispersion and sonic integrity usually associated with much more expensive speakers.

KEY FEATURES

- 2-way, passive speaker system
- Custom designed low distortion, high power handling 8 inch woofer
- 300 watt program, 600 watt peak power handling capability
- 124dB maximum dB SPL
- 8Ω enclosure impedance
- Two NL4 Speakon™ type connectors with two ¼" phonejacks - wired in parallel
- Built-in, rubberized, easy-grip handles for easy transportation
- High frequency driver bulb protection
- Trapezoidal shape for vertical arrays and horizontal stage monitor use
- Top stacking feature for easy integration of multiple enclosures
- Eight M6 threaded inserts (3 on top, 4 on the bottom and 1 on the side) for rigging applications or wall bracket mounting
- High density mineral loaded injection molded polypropylene enclosure
- Integral cord wrap and cable anchor molded into the enclosure

FRONT PANEL FEATURES

High frequency driver

The high frequency driver is a custom designed 1.2" ferrofluid cooled compression driver with 1" exit throat diameter.

Elliptical Wave Guide™

The EWG™ is designed to provide acoustically transparent high frequency pattern control. This EWG™ waveguide (horn) enables a 90 x 60 degree high frequency coverage.

Ports

There are two ports on front of the Titan™ 8 that are reflex tuned to provide enhanced low frequency response from the enclosure.

Pole mount socket and bracket attachment

The bottom of the Titan™ 8 provides a convenient built in pole mount socket for easy mounting on a standard 35mm diameter pole from a stand as well as 4 threaded inserts for a wall bracket.

Low frequency driver

The low frequency driver is a custom designed, high quality 8" loudspeaker.

SPECIFICATION

Model Name	Titan 8™
System Type	Two way passive speaker system
Frequency Response (+/-3dB)	70Hz-20kHz
Low Frequency Transducer	
Size (mm / inches)	205mm / 8"
Coil Size (mm / inches)	38.86mm / 1.53"
Frame Material	Die-cast aluminium frame
High Frequency Transducer	
Type	Compression Driver
Coil Size (mm / inches)	30mm / 1.2"
Exit Size (mm / inches)	25mm / 1"
Diaphragm Material	Cloth
High Frequency Coverage	
Horizontal	90° averaged 2kHz to 10kHz
Vertical	60° averaged 2kHz to 10kHz
High Frequency Protection type	Bulb
Crossover	
Crossover Frequency	2.4kHz, 12dB per octave
Power Rating	
Continuous	150W
Program	300W
Peak	600W
Maximum SPL	124dB SPL Peak
System Sensitivity (1w@1m)	96dB SPL
Input Connector	NL4 Speakon™ type x2 1/4" phone jack x 2 (All wired in parallel)
Input Impedance	8Ω
Rigging / Bracket / Mounting Options	8 M6 threaded inserts including 4 M6 threaded inserts on bottom in OmniMount 60.0-type footprint Pole-mount receptacle with lock screw 1 built-in carry handle Optional wall-mount bracket
Enclosure	
Enclosure Material	Injection Molded Polypropylene
Colour	Grey or white
Dimensions (mm / inches):	
H	396mm / 15.59"
W	266mm / 10.47"
D	221mm / 8.7"
Weight	
Net Weight (kg / lbs)	5.5kg / 12.1 lbs
Gross Weight (kg / lbs)	7.5kg / 16.5 lbs

APPLICATIONS:

At home indoors or outdoors, on stage, in studios, in clubs, at rehearsals, in theaters and houses of worship, the Titan™ 8 will provide the high standards of audio reproduction that you require.

